



HAMILTON
GROUP

HISTORIC
CBD
CORNER

54 MALOP



54

**MALOP ST.
GEELONG CBD**



OUR SITE

- 2,600m²** Floorspace
- 2018** Refurbishment
- 1920's** Neo Grecian Style
- 700m²** Rooftop restaurant / Taphouse
- 270m²** Dual frontage retail
- 100** Years of history
- 5** Unique tenancies

OUR LOCATION

**WALK TO NDIA, WORKSAFE,
PARK & WATERFRONT**

**DIRECT ACCESS TO
GREENSPINE**

**DIRECT ACCESS TO
LANEWAYS PRECINCT**



GEELONG CBD



AVALON AIRPORT
21KM



GEELONG STATION
600M



PRINCES HWY
1KM



WATERFRONT
450M

OUR FEATURES

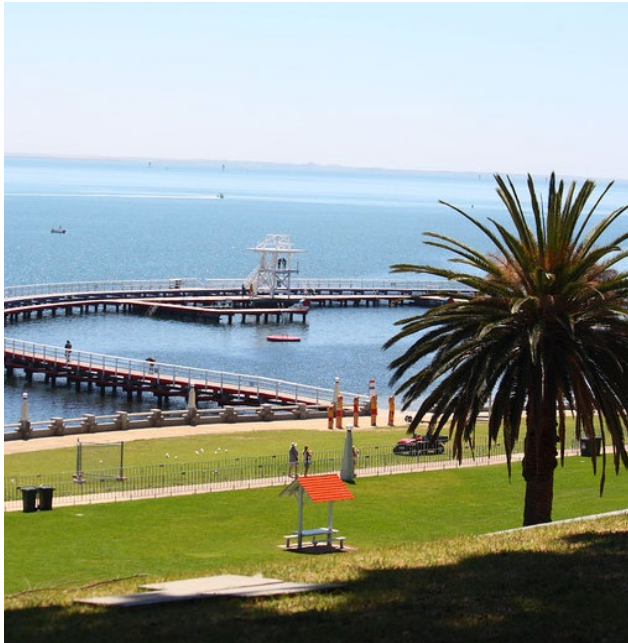
**OPENED AS NATIONAL
MUTUAL BUILDING**

**HERITAGE FOCUSED
RESTORATION**

**MULTIPLE CHARACTER
FILLED TENANCIES**

CAM HAMILTON: 0412 927 229

**www.hamilton.net.au
cam@hamilton.net.au**



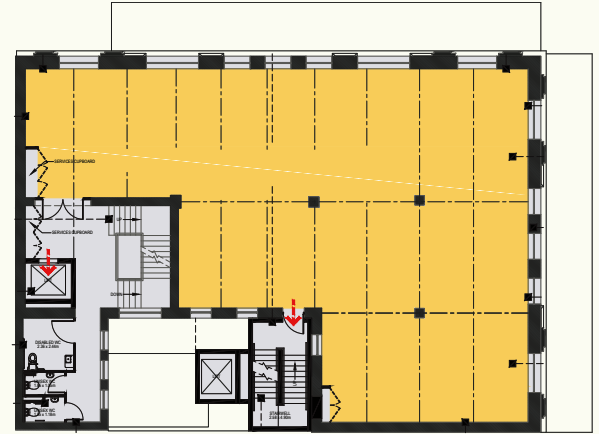
BASEMENT
220m²



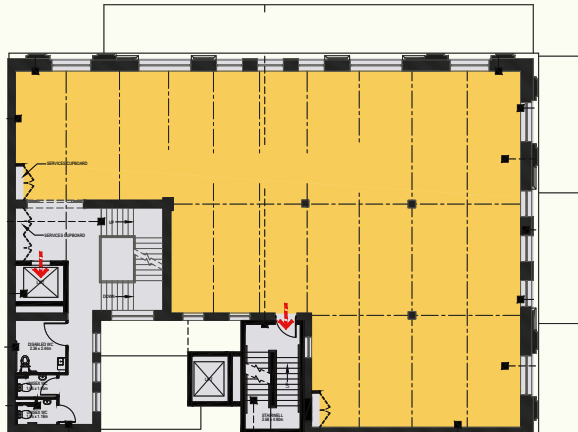
GROUND FLOOR
270m²



FIRST FLOOR
330m²



SECOND FLOOR
330m²



THIRD FLOOR
330m²

